



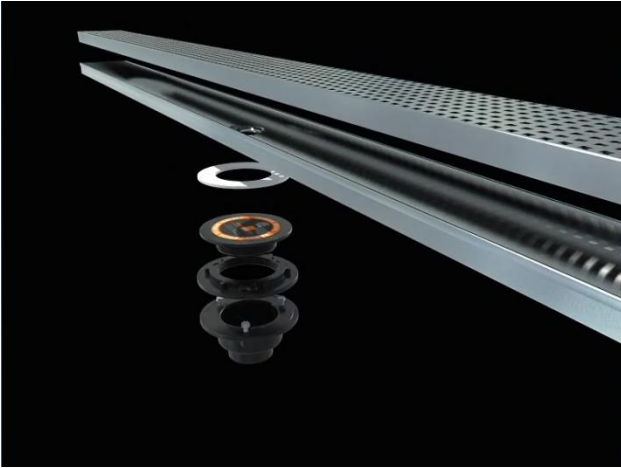
showergrateshop.com

the missing piece to the bathroom of your dreams
the missing piece to the bathroom of your dreams

Linear Drain Installation Instructions

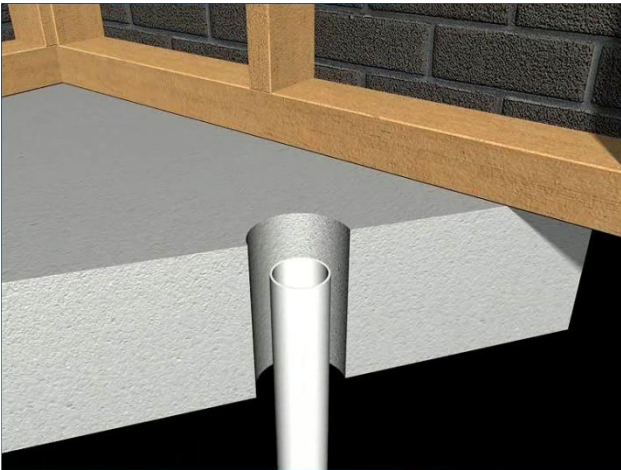
Shower **Grate** Shop
OFFICE: (800)746-9885
FAX: (800)746-6088

www.showergrateshop.com
info@showergrateshop.com



Linear shower Drain components:

1. Grate top..... x 1
2. Lower trench.....x1
3. Gasket (only on 2" width model)x1
4. Debris decal.....x1
5. Height adjuster.....x1
6. Clamping ringx1
7. 2" install kit with reducer to 1-1/2"x1
8. Screws.....x3
9. Screws.....x2

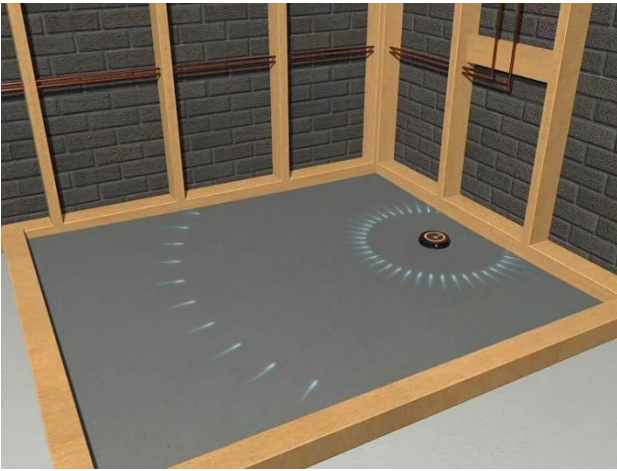


Bring pipe through your flooring to desired position. Can be positioned so that your linear drain lies tight against the wall or take 1 to 2" off of the back and side walls for easier access to grate top (shown)



Concrete (shown):
Attach bottom part of install kit to your subfloor. Recess out concrete using a grinding wheel in order for lower install kit to sit flush with floor.

Wooden Subfloor:
Install a wire mesh and a slip sheet over top of the subfloor. This allows for "grab" when you start to pour the pre-slope. Attach bottom part of install kit



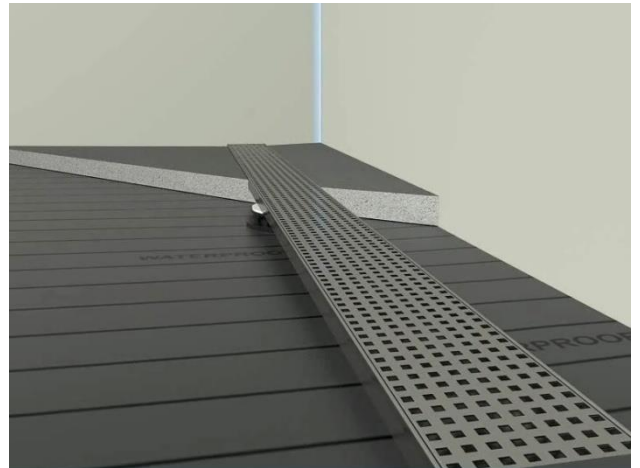
Create a pre-slope to guide water to the outlet. The idea is to create a slope from the outside perimeter of the shower pan to the drain allowing any moisture caught in the liner to flow unrestricted out through the weep holes of the install kit.



Line the pre-slope with a waterproof membrane, cross (X) cut holes for the three screws of the install kit and clamp the top half of the install kit over the waterproof membrane.



Tape all critical seams



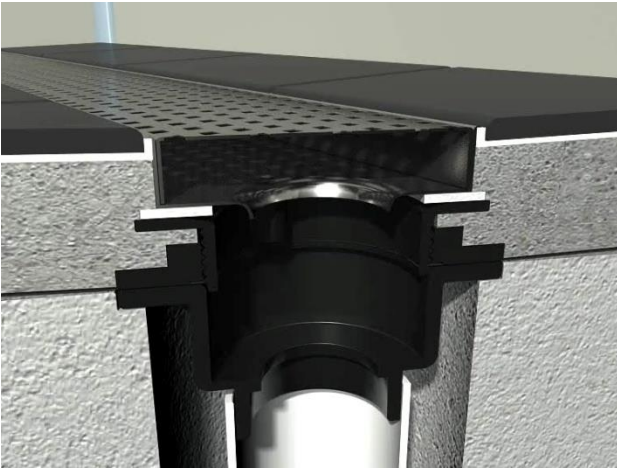
Set your linear drain on the height adjuster and set to finished height of tile, screw linear drain to height adjuster.

Making sure the weep holes are not blocked create a $\frac{1}{4}$ " per foot slope towards the linear drain.

A one way fall is usually achieved. However if you choose to install your linear drain slightly off of the wall (shown) you will also need to slope that area towards the linear drain.

Shower **Grate** Shop
 OFFICE: (800)746-9885
 FAX: (800)746-6088

www.showergrateshop.com
info@showergrateshop.com



Lay tiles flush with linear drain and silicone.

For an invisible look, lay tiles slightly above the linear drain. Using a clear silicone a run a bead around all four edges.



Finish tiling en-suite and install all necessary fixtures

TILE-INSERT INSTALLATION



When installing your tile into the tile-insert grate top a silicone based agent is recommended.

The tile-insert grate has a top and bottom, the bottom has perforations on the feet and is the wider of the two compartments. (DO NOT ADHERE TILE TO THE BOTTOM AS WATER FLOW WILL BE SIGNIFICANTLY REDUCED AND MAY EVEN BE COMPLETELY RESTRICTED).

The top part is where your tile is meant to adhere too and has a ¼" clearance on each side and its ends from the lower trench.