

## Product Category: DERA-Line EuroTop Trench Drain

### Series: 20DLE

#### OVERVIEW:

- 16 gauge 304 Stainless Steel grate and channel
- Pre-pitched via break-lines with "Fixed" lengths and centered outlet
- Not site sizeable
- Indoor or outdoor use
- Works with 2" clamp down floor drain (included)
- Uses Hot Mop, Lead Pan, PVC Vinyl Liner, Rubber Liner (Chloraloy™), Copper Pan or Fiberglass waterproofing
- Grate can be removed completely for cleaning
- Flow rate 9 GPM per outlet\*

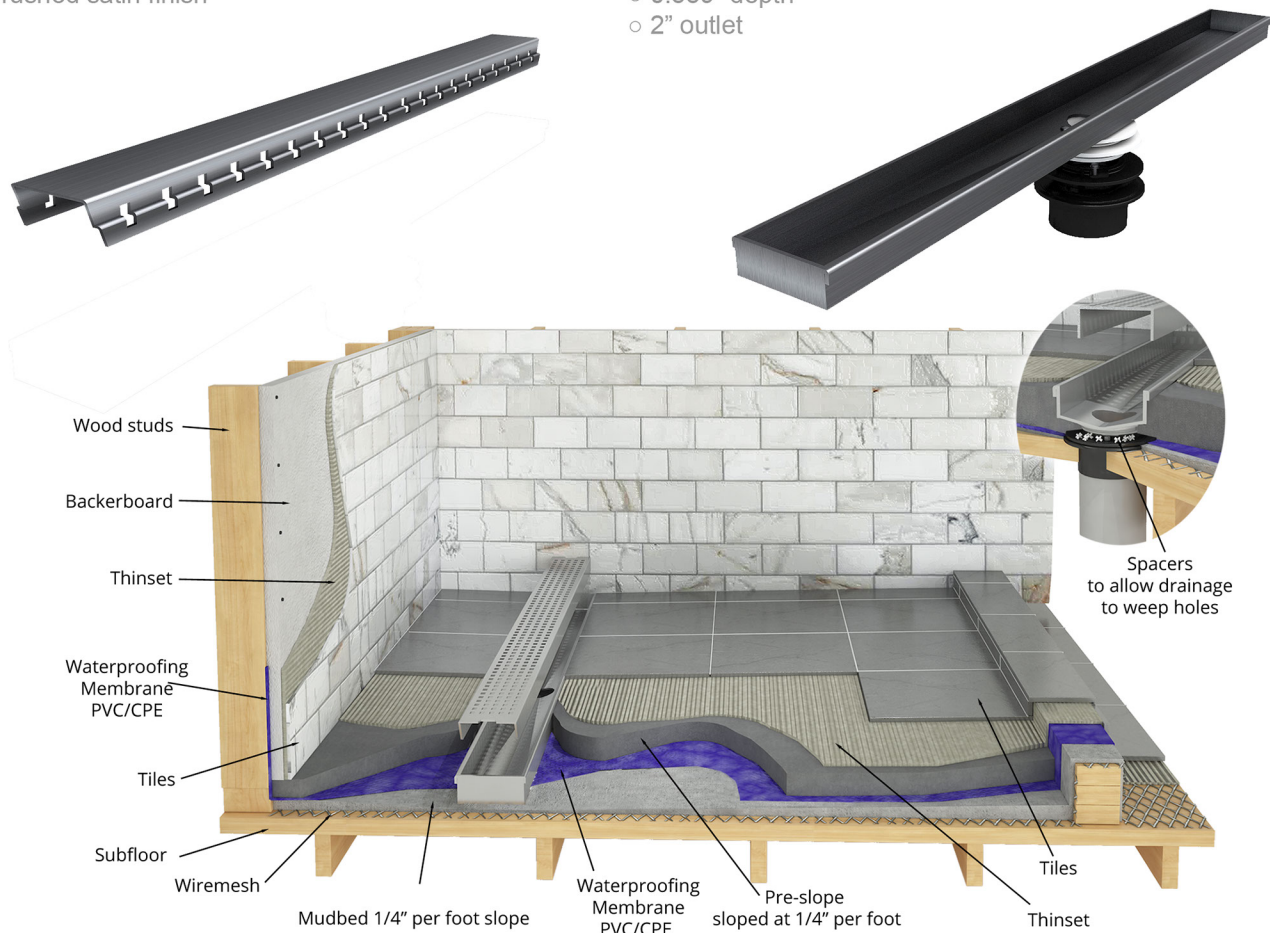
\*Flow rate measured at outlet only. Measurement does not account for water in channel or sheeting on shower floor.

#### GRATE TOP (EuroTop)

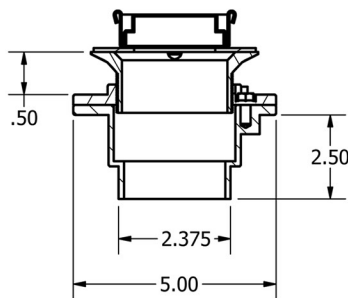
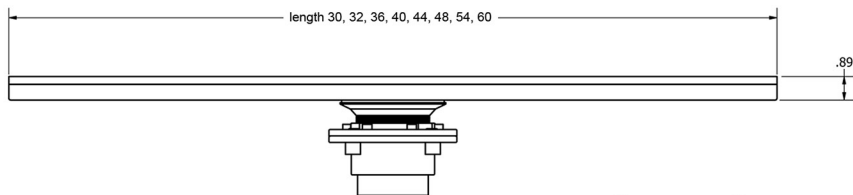
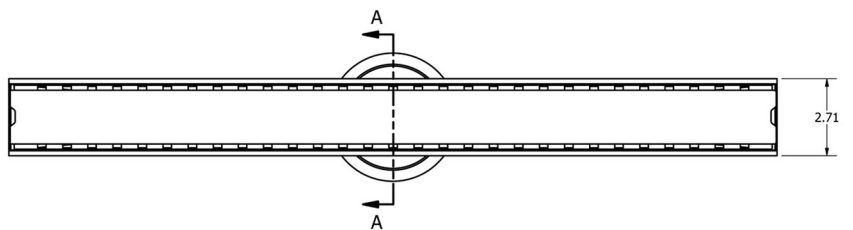
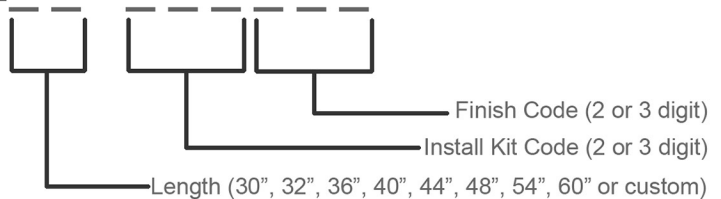
- 2-1/2" overall width
- Height adjustable
- Brushed satin finish

#### LOWER CHANNEL

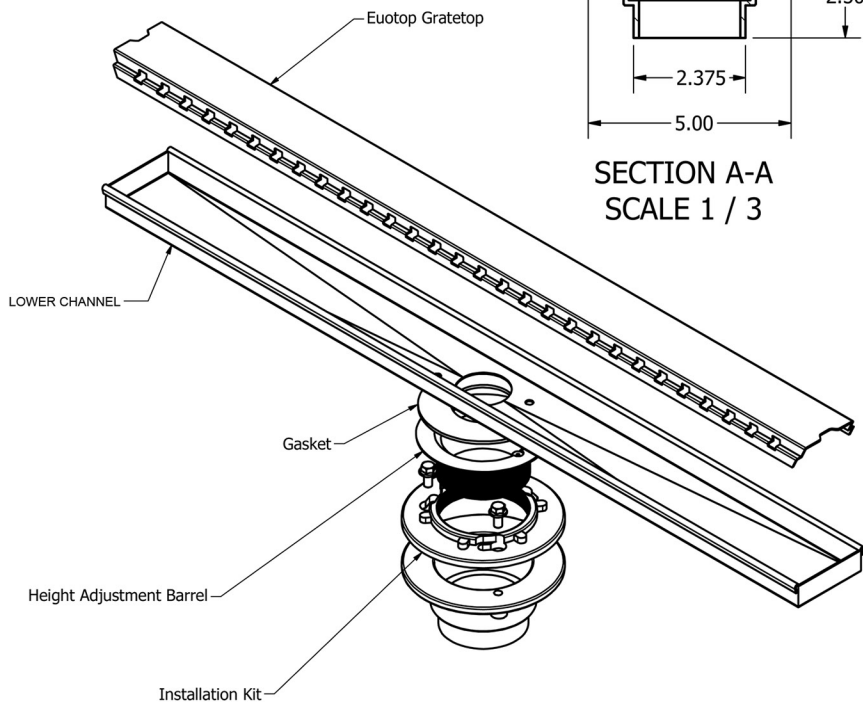
- Sloped via break-lines with center outlet
- 2-3/4" overall width
- 0.859" depth
- 2" outlet



**Product Category:** DERA-Line EuroTop Trench Drain  
**Item Number:** 20DLE



SECTION A-A  
SCALE 1 / 3



Category:

Code:

**Install Kit**

|                       |     |
|-----------------------|-----|
| Plastic               | 000 |
| Cast iron             | CI  |
| Cast iron side outlet | CSO |

**Finish:**

|                   |     |
|-------------------|-----|
| Brushed satin     | 000 |
| Oil rubbed bronze | ORB |
| Matte Black       | MB  |
| Matte white       | MW  |

\*Additional lead times may occur for finishes other than standard (000)

**Note:** Installer must verify all rough-in dimensions prior to installation and consult local and national codes. Conformity and compliance to local and national codes are the responsibility of the installer.