

## Product Category: GARDA-Line EuroTop Trench Drain

### Series: 14GLE

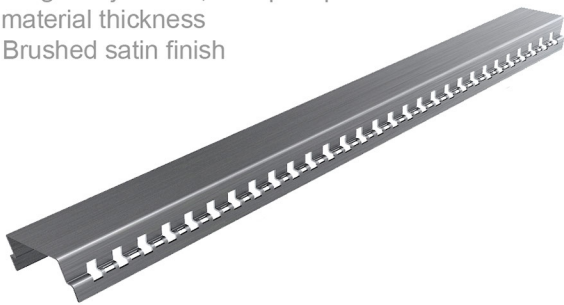
#### OVERVIEW:

- 16 gauge 304 Stainless Steel grate
- 18 gauge 304 Stainless Steel channel
- Pre-pitched and V-bottomed channel with "Fixed" lengths and centered outlet
- Not site sizeable
- Indoor or outdoor use
- Bonded "Flange" installation for tight against the wall applications
- Can be installed flush with subfloor for a low-profile (curbless) installation
- Uses Fabric Sheet Membrane (GARDA) or Liquid waterproofing
- Grate can be removed completely for cleaning
- Flow rate 9 GPM per outlet\*

\*Flow rate measured at outlet only. Measurement does not account for water in channel or sheeting on shower floor.

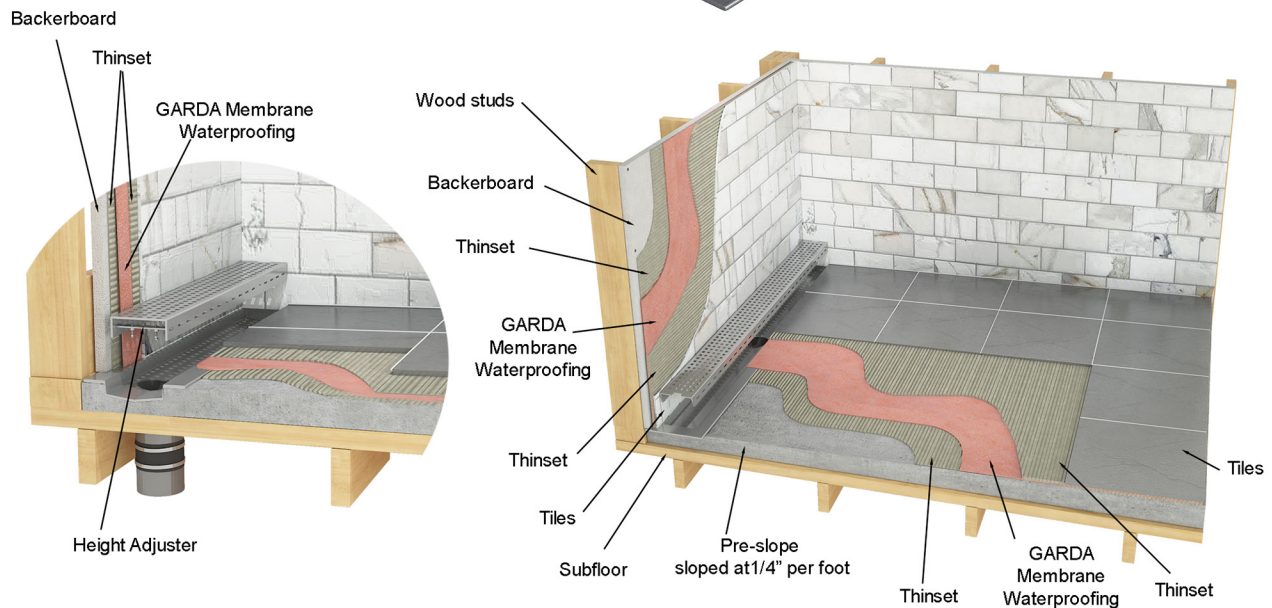
#### GRATE TOP (EuroTop)

- 2-1/2" overall width
- Height adjustable, accepts up to 1" material thickness
- Brushed satin finish



#### LOWER CHANNEL

- Pre-pitched and V-bottomed channel with center outlet
- Measures 2" longer than grate top
- 3/4" depth
- 2" outlet

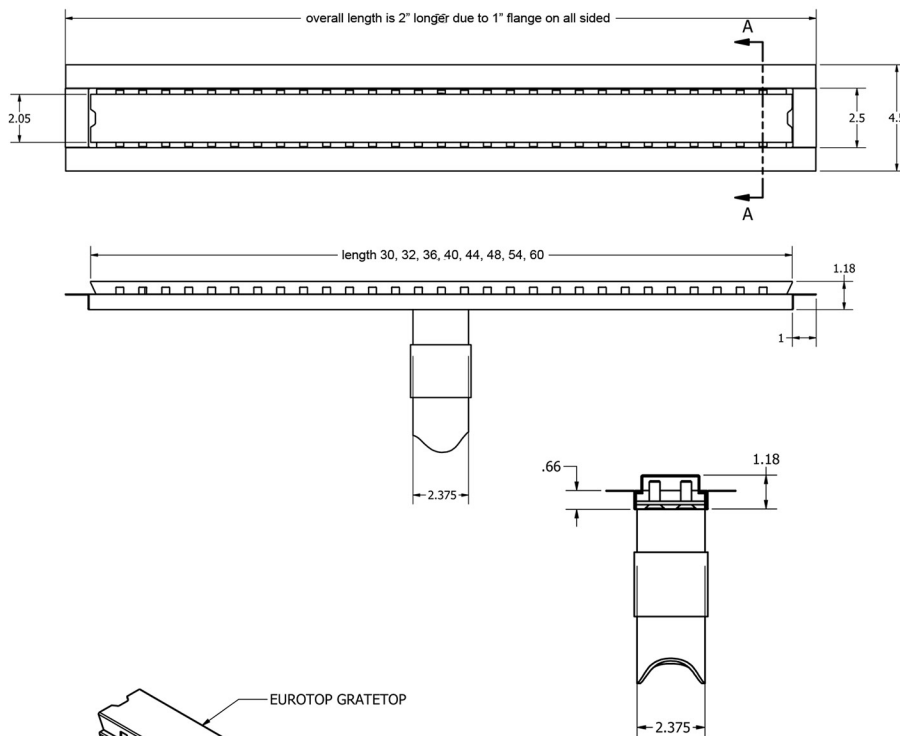


**Product Category:**  
**Item Number:**

**GARDA-Line EuroTop Trench Drain**  
**14GLE -**



Finish Code (2 or 3 digit)  
Length (30", 32", 36", 40", 44", 48", 54", 60" or custom)



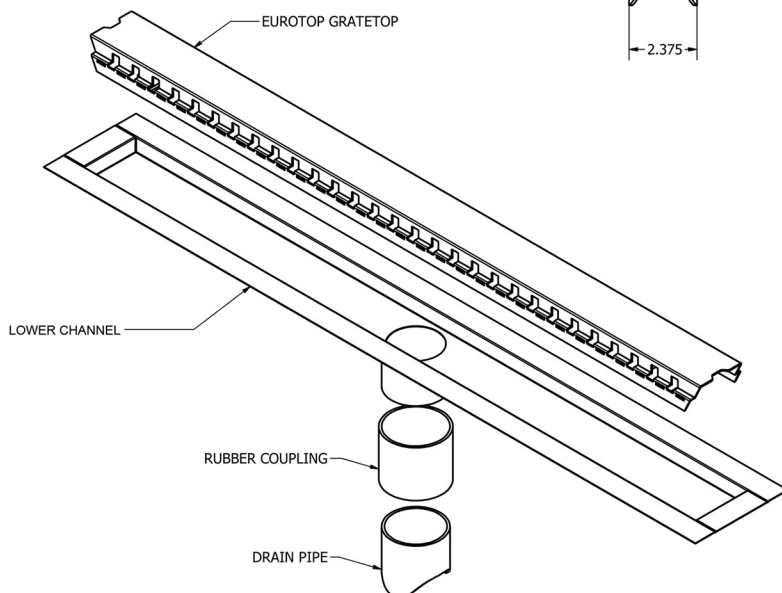
Category:

Code:

**Finish:**

Brushed Satin	000
Oil Rubbed Bronze	ORB
Matte Black	MB
Matte White	MW

\*Additional lead times may occur for finishes other than standard (000)



**Note:** Installer must verify all rough-in dimensions prior to installation and consult local and national codes. Conformity and compliance to local and national codes are the responsibility of the installer.