

Product Category: GARDA-Line GeoTop Trench Drain

Series: 14GLG

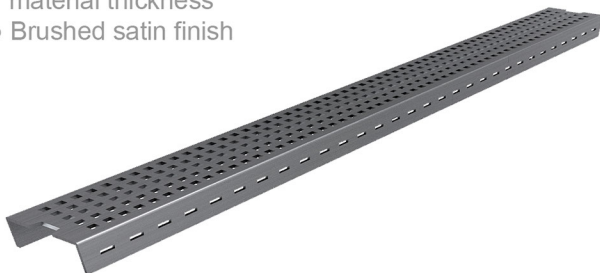
OVERVIEW:

- 16 gauge 304 Stainless Steel grate
- 18 gauge 304 Stainless Steel channel
- Pre-pitched and V-bottomed channel with "Fixed" lengths and centered outlet
- Not site sizeable
- Indoor or outdoor use
- Bonded "Flange" installation for tight against the wall applications
- Can be installed flush with subfloor for a low-profile (curbless) installation
- Uses Fabric Sheet Membrane (GARDA) or Liquid waterproofing
- Grate can be removed completely for cleaning
- Flow rate 9 GPM per outlet*

*Flow rate measured at outlet only. Measurement does not account for water in channel or sheeting on shower floor.

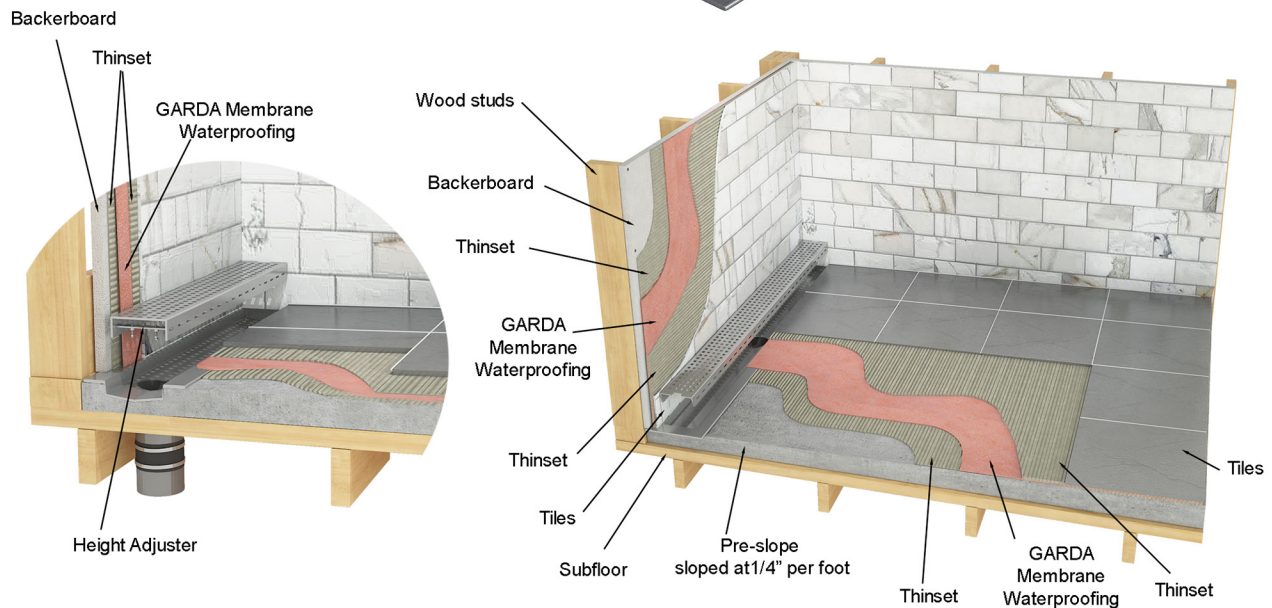
GRATE TOP (GeoTop)

- 2-1/2" overall width
- Height adjustable, accepts up to 1" material thickness
- Brushed satin finish

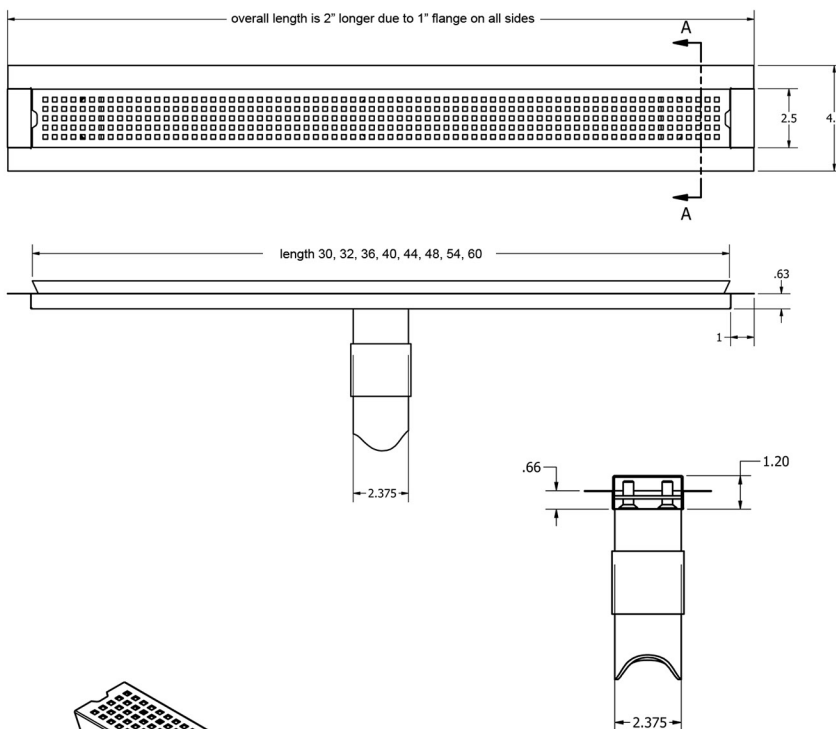
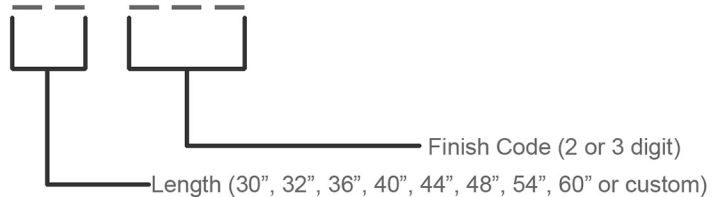


LOWER CHANNEL

- Pre-pitched and V-bottomed channel with center outlet
- Measures 2" longer than grate top
- 3/4" depth
- 2" outlet



Product Category: GARDA-Line GeoTop Trench Drain
Item Number: 14GLG -

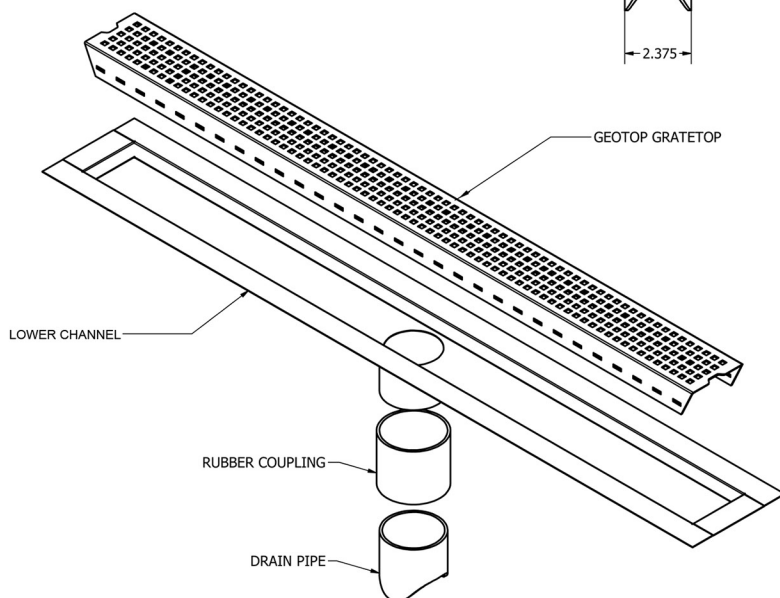


CATEGORY: CODE:

Finish:

Brushed satin (standard)	000
Oil rubbed bronze	ORB
Matte black	MB
Matte white	MW

*Additional lead times may occur for finishes other than standard (000)



Note: Installer must verify all rough-in dimensions prior to installation and consult local and national codes. Conformity and compliance to local and national codes are the responsibility of the installer.