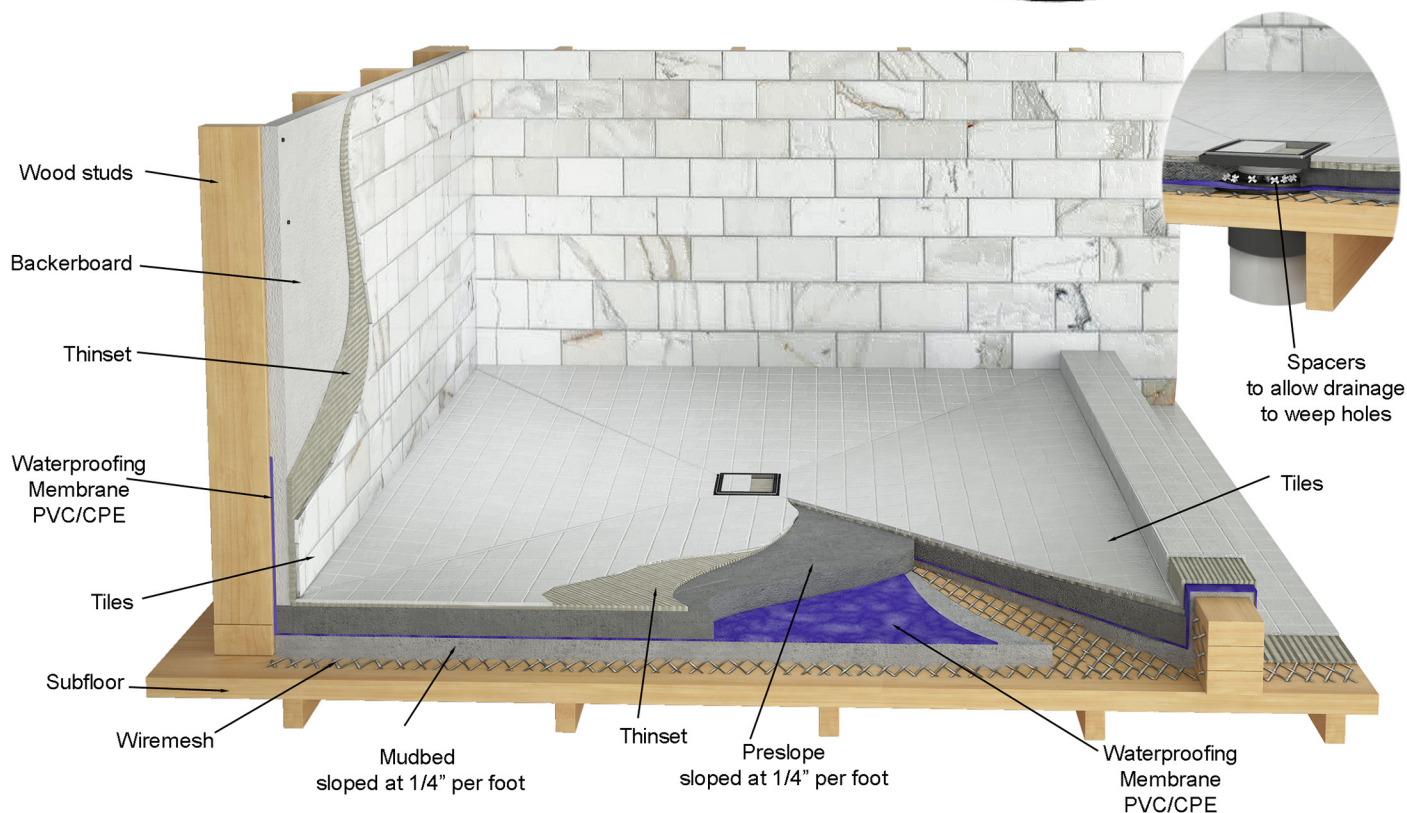


Product Category: Square Drain Geotop
Series: SQD-G-5

OVERVIEW:

- 16 gauge 304 Stainless Steel top with ABS base
- Low-profile design 7/16" depth
- Indoor or outdoor use
- Uses Hot Mop, Lead Pan, PVC Vinyl Liner, Rubber Liner (Chloraloy™) Copper Pan or Fiberglass waterproofing
- Grate can be removed completely for cleaning
- Requires traditional 4-way floor pitch
- Flow rate 9 GPM per outlet*

*Flow rate measured at outlet only. Measurement does not account for water in channel or sheeting on shower floor.

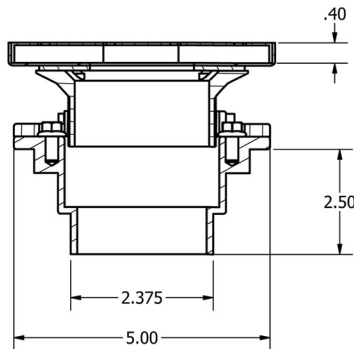
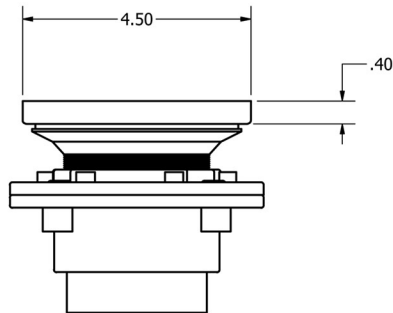
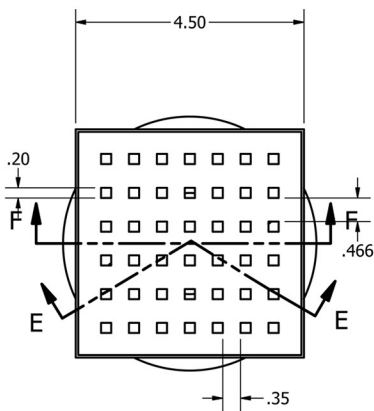


Product Category: Square Drain GeoTop
Item Number: SQD-G-5

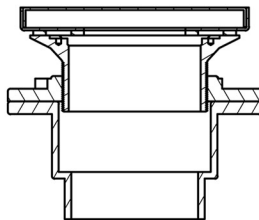
SPECIFICATIONS:



Install Kit Code (2 or 3 digit)



SECTION E-E
SCALE 1 / 2



SECTION F-F
SCALE 1 / 2

CATEGORY:

CODE:

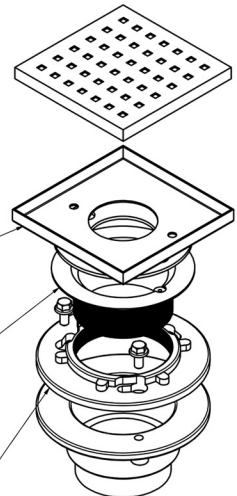
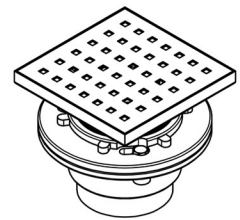
Installation Kit:

Plastic (standard)

000

Cast iron

CI



Base

Height Adjustment Barrel

Installation Kit

Note: Installer must verify all rough-in dimensions prior to installation and consult local and national codes. Conformity and compliance to local and national codes are the responsibility of the installer.