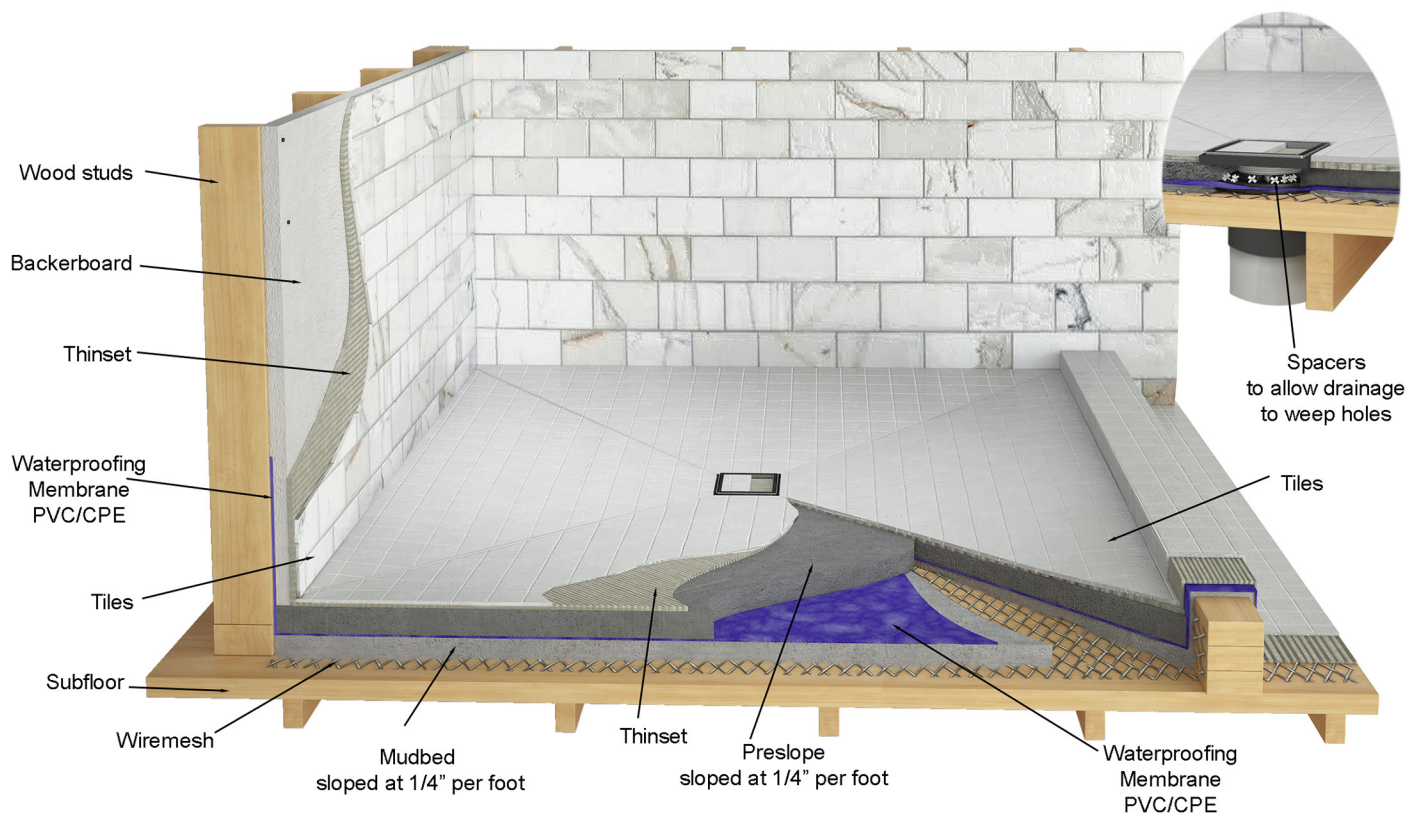


**Product Category:** Square Drain WedgeWire  
**Series:** SQD-WW-5

**OVERVIEW:**

- 1/8" thick 304 Stainless Steel grate
- 18 gauge 304 Stainless Steel base
- Low-profile design 7/16" depth
- Heelguard compliant
- Indoor or outdoor use
- Uses Hot Mop, Lead Pan, PVC Vinyl Liner, Rubber Liner (Chloraloy™), Copper Pan or Fiberglass waterproofing
- Grate can be removed completely for cleaning
- Requires traditional 4-way floor pitch
- Flow rate 9 GPM per outlet\*

\*Flow rate measured at outlet only. Measurement does not account for water in channel or sheeting on shower floor.



Product Category: Square Drain WedgeWire  
Item Number: SQD-WW-5

## SPECIFICATIONS:



Install Kit Code (2 or 3 digit)

CATEGORY:

CODE:

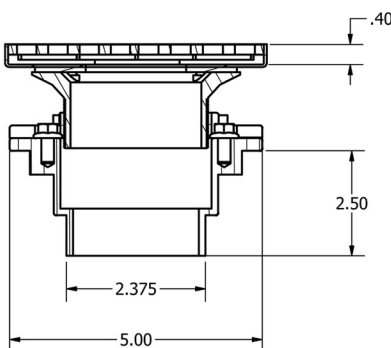
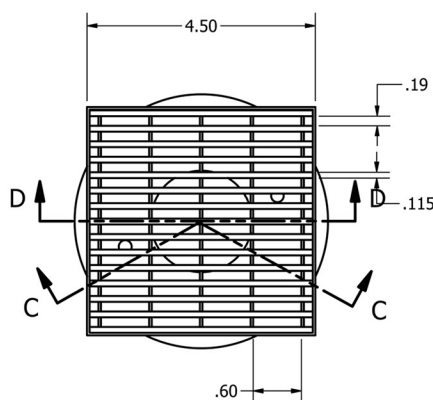
Installation Kit:

Plastic (standard)

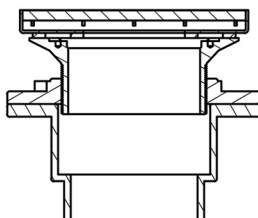
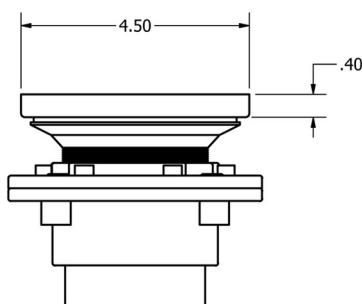
000

Cast iron

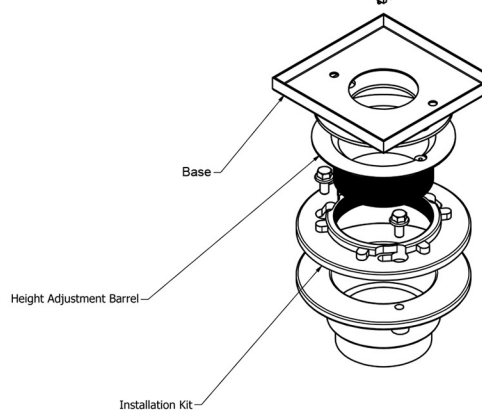
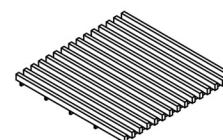
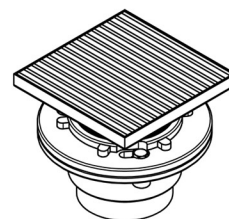
CI



SECTION C-C  
SCALE 1 / 2



SECTION D-D  
SCALE 1 / 2



**Note:** Installer must verify all rough-in dimensions prior to installation and consult local and national codes. Conformity and compliance to local and national codes are the responsibility of the installer.